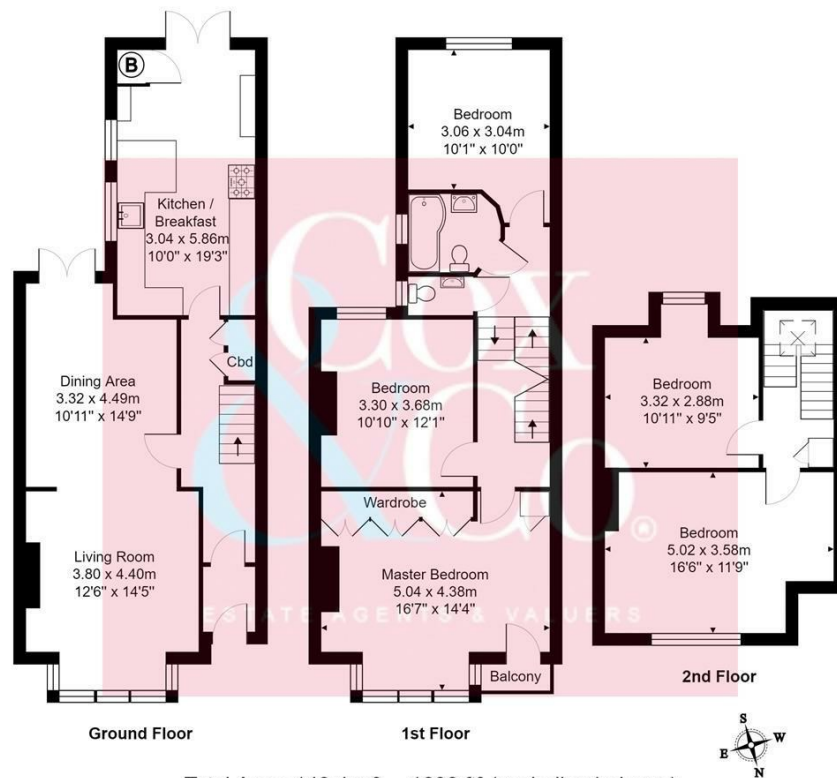




- Period Family House
- Superb Lounge Diner
- South Facing Garden
- External Home Office
- Must Be viewed
- Hall adjoining With Side Access
- Contemporary Kitchen Breakfast Room
- Close to mainline railway station
- Popular and Central Location

# St. Andrews Road, Portslade, Brighton

Price: £625,000 Freehold



Superb five-bedroom semi-detached (end of Terrace) period hall adjoining house, that benefits from having a through lounge/diner a lovely contemporary kitchen which opens out to a fantastic south facing garden which for a house so centrally located is uniquely not overlooked and really does offer a good degree of privacy. There is also a home office and workshop in the rear garden ideal for anyone wanting that go to work feeling without leaving the house.

All five of the bedrooms are of a good size making this an ideal family home.

The property is ideally located just off Boundary Road in West Hove and is very close to shops, bars, and cafés. Portslade mainline railway station is only 0.3 miles away and there are excellent bus services into Brighton & Hove city centres.

