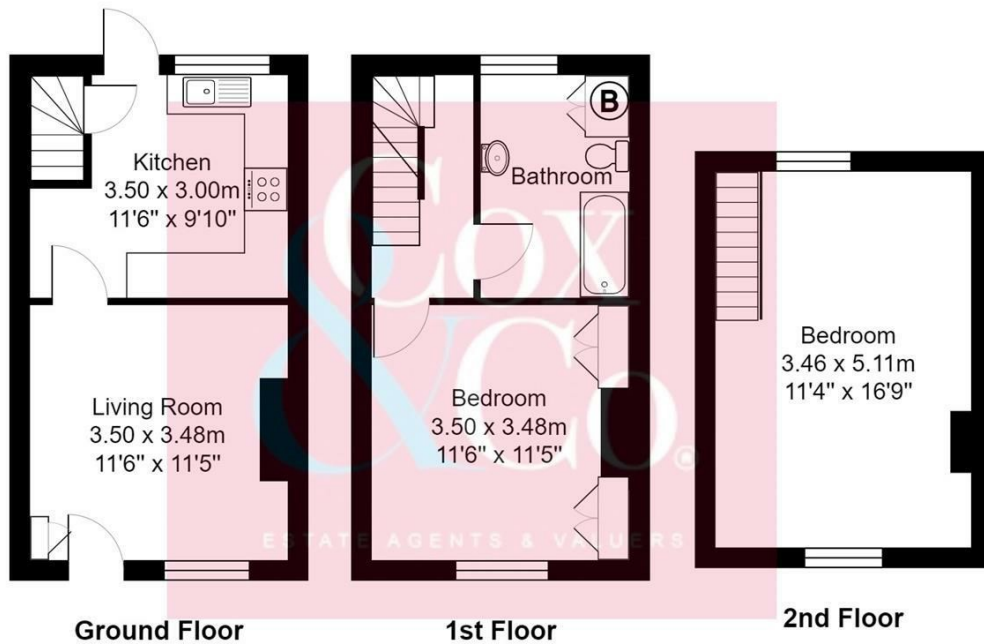




- Three Storey Flint Cottage
- Modern Fitted Kitchen
- Two Double Bedrooms
- Rear Courtyard
- Early Viewing Advised
- 18th Century Grade Two Listed
- Lounge
- No Onward Chain
- Very Unique Property

Robins Row, Portslade

Price: £290,000 Freehold



Total Area: 63.8 m² ... 686 ft²

All measurements are approximate and for display purposes only. Copyright 'GREEN PROPERTIES' 2020

Cox & Co are delighted to offer this very unusual two-bedroom grade 2 listed cottage.

The property was built in the 18th century and was originally the farmworkers' cottages from the farm owned by the Robin family.

Located in the centre of Portslade old village with local shops next door. The ground floor comprises a modern fitted kitchen and lounge with bedrooms and bathroom on the upper floor including second-floor master bedroom.

Outside to the rear, there is a shared patio courtyard, each resident looks after the space directly outside their property.

For more information on Listing see the historic England website - <https://historicengland.org.uk/listing/the-list/list-entry/1292518>

