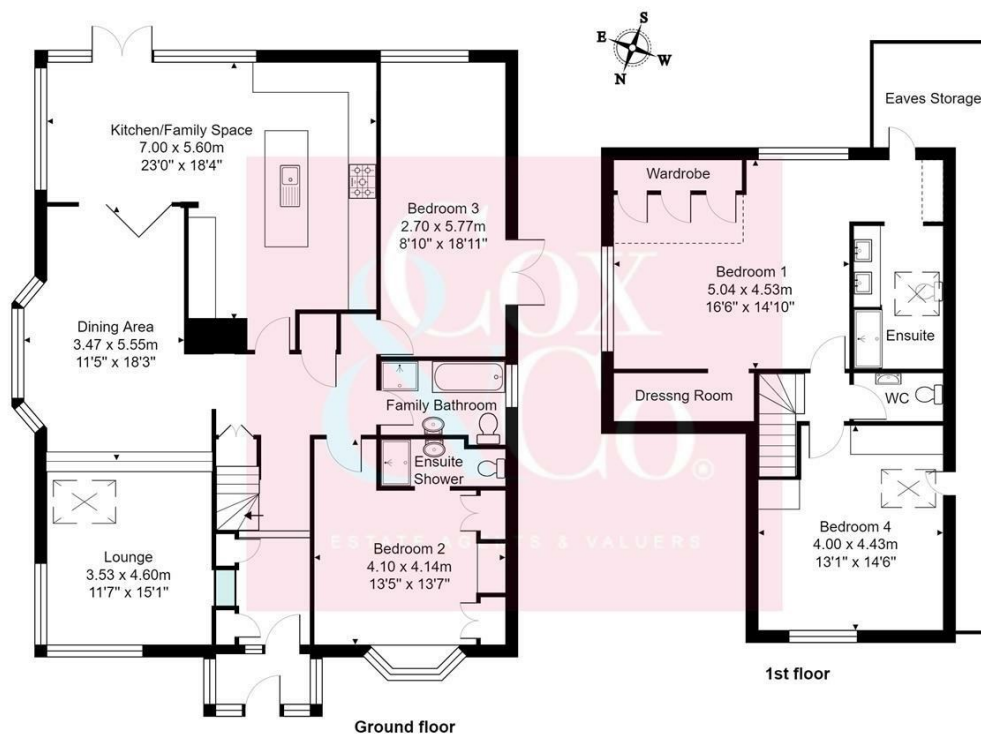




- Superb Detached Corner Bungalow
- Four Double Bedrooms Two Having En-suite Facilities
- Gardens To Three Sides
- Modern Kitchen Breakfast Room
- Open Plan Lounge & Dining Area
- Parking For At Least Three Cars
- Fantastic Views
- Popular Location
- Simply Must Be Viewed To be appreciated
- Garage Private Driveway

Green Ridge, Brighton

Price: £760,000 Freehold



Total Area: 190.4 m² ... 2049 ft² (excluding eaves storage)

Cox & Co are pleased to offer this superb four double bedroom detached bungalow located in the heart of the most popular and sought after Withdean district of Brighton.

The property has been tastefully improved and extended over the years and simply has to be viewed to be appreciated.

The accommodation comprises on the ground floor you enter via an enclosed porch into the hallway you then step into an open plan dining area to the left, or you can walk straight into the modern kitchen breakfast room which opens up to a family space with fantastic views up towards the copse and the south downs. The open plan lounge has a tremendous atrium ceiling giving this area a real feel of space and is very light and spacious.

There are two bedrooms on the ground floor, the most significant having an ensuite shower room and WC. There is also a separate family bathroom on the ground floor. On the first floor, you have another two bedrooms the master bedroom has a large built-in wardrobe and separate dressing room with an ensuite shower room. There is another double bedroom and a separate wc.

Outside the property has mature and picturesque gardens to three sides which over the years have been carefully looked after there is also a sunken outside dining area which offers a great degree of seclusion.

There is a garage approached via a private driveway with parking for a least three family size cars.

