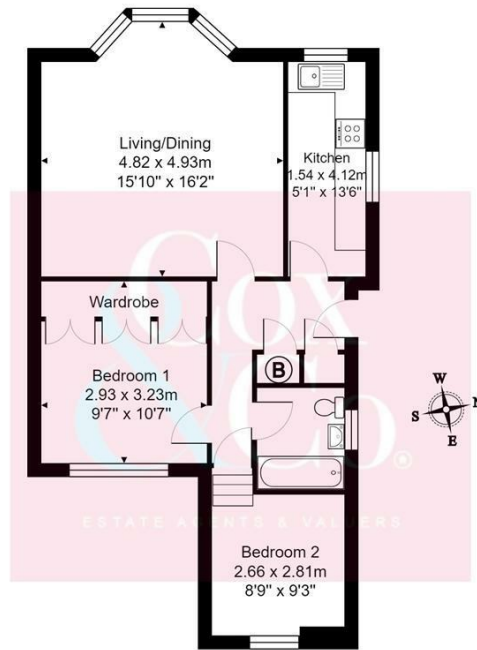




- First Floor Apartment
- Share Of The Freehold
- Popular Location
- Two Double Bedrooms
- Garage

## Windsor Close, Hove

Price: £242,500 Share of Freehold



Total Area: 60.8 m<sup>2</sup> ... 654 ft<sup>2</sup>

All measurements are approximate and for display purposes only. Copyright 'GREEN PROPERTIES' 2020

A two-bedroom first-floor purpose built apartment located in the heart of the Goldstone Valley district of Hove. The property has easy access to the both the A23 and A27. Bus services into both Brighton and Hove city centres can be found close by.

The property has two double bedrooms, a share of the freehold and a garage.

Energy Efficiency Rating		
	Current	Potential
Very energy efficient - lower running costs		
(92 plus) <b>A</b>		
(81-91) <b>B</b>	78	78
(69-80) <b>C</b>		
(55-68) <b>D</b>		
(39-54) <b>E</b>		
(21-38) <b>F</b>		
(1-20) <b>G</b>		
Not energy efficient - higher running costs		
<b>England &amp; Wales</b>	EU Directive 2002/91/EC	