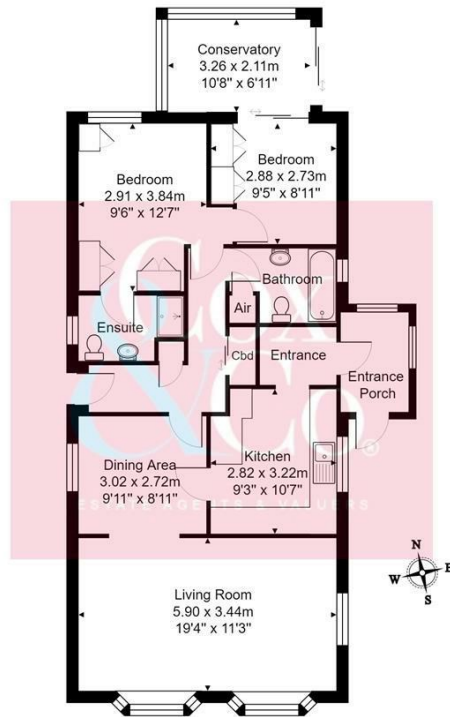




- Detached Park Home
- Lounge & Dining Room
- Master Bedroom with En Suite Shower Room/WC
- Conservatory
- Two Double Bedrooms
- Fitted Kitchen with Utility Room
- Gardens to Three Sides
- Over 55's Only

Willowbrook Park, Lancing

Price: £220,000 Leasehold



Total Area: 88.9 m² ... 957 ft²

All measurements are approximate and for display purposes only. Copyright 'GREEN PROPERTIES' 2021

A Fantastic Detached Home in a popular position on Willowbrook Park, As the name, suggests a brook runs throughout the park and has an abundance of wildlife including Swans, Ducks, Coots, Moorhens, kingfishers and an assortment of Newts and Tadpoles, Also within reach is Lancing sailing club, Widewater Nature Reserve & the South Downs.

Lancing Village is close by which offers local shops, library, Doctors Surgery, Supermarket, Mainline train station to Brighton and London Victoria.