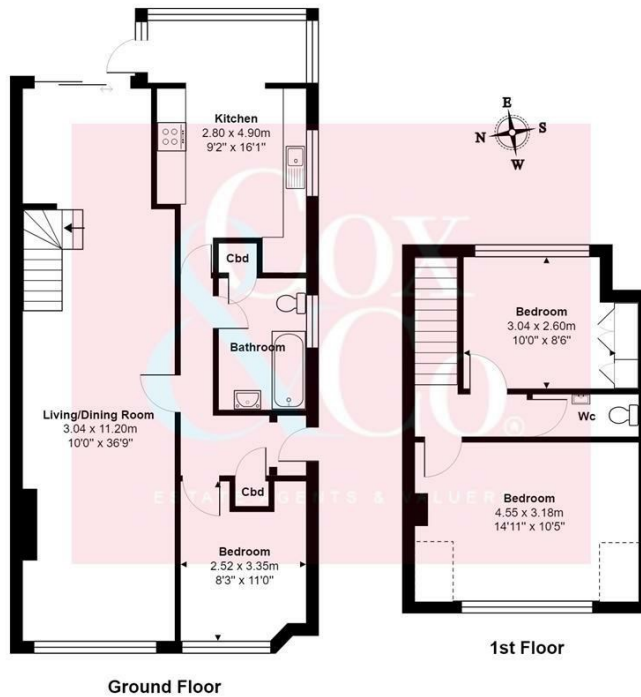




- Semi Detached Bungalow
- Through Lounge Diner
- Family Bathroom
- Popular Family Location
- Three Bedrooms
- Modern Fitted Kitchen
- No Onward Chain

Oakdene Crescent, Portslade, Brighton

Price: £360,000 Freehold



Total Area: 99.2 m² ... 1068 ft²

All measurements are approximate and for display purposes only.

Cox & Co are pleased to offer this three bedroom semi-detached chalet bungalow located in the heart of the popular Mile Oak district of Portslade.

The property is in good decorative order throughout and is sold with the benefit of having no onward chain and is ready for immediate vacant possession.

The accommodation comprises of on the ground floor you have a nice size through lounge and diner, a modern fitted kitchen and family bathroom and one of the bedrooms. On the second floor, you have two double bedrooms.

Outside there is a small but nice size rear garden with a raised BBQ area and side access.

For viewing please call Cox & Co on 01273 00 99 66

Energy Efficiency Rating		Current	Potential
Very energy efficient - lower running costs			
(92 plus) A			85
(81-91) B			
(69-80) C		69	
(55-68) D			
(39-54) E			
(21-38) F			
(1-20) G			
Not energy efficient - higher running costs			
England & Wales		EU Directive 2002/91/EC	

