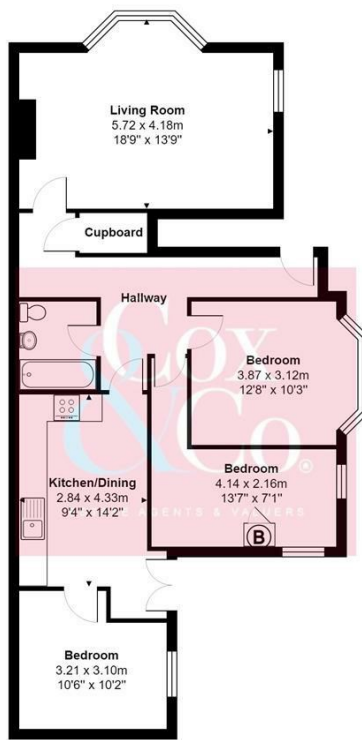




- **Converted Three Bedroom Garden Flat**
- **Attractive Rear Garden**
- **Kitchen Breakfast Room**
- **Opposite Victoria Park**
- **Share of Freehold**
- **Lounge/Dining Room**
- **0.4 Miles From Mainline Station**
- **Popular Location**

Old Shoreham Road, Portslade, Brighton

Price: £325,000 Share of Freehold



Total Area: 85.5 m² ... 920 ft²
 All measurements are approximate and for display purposes only

Cox & Co are pleased to offer this three-bedroom ground floor converted garden flat located within 0.4 miles of Portslade mainline railway station and the busy and popular Boundary Road shopping district with all its independent retailers, shops, pubs, restaurants and coffee shops. The property is also very close to Victoria Park in Portslade.

Occupying the ground floor of this period house, the accommodation comprises of having three bedrooms, a generous bay fronted lounge and dining room, separate fitted kitchen breakfast room, modern bathroom suite and a good sized private rear garden.

The property also has the benefit of being sold with a share in the freehold.

For viewings please call Cox & Co on 01273 00 99 66

