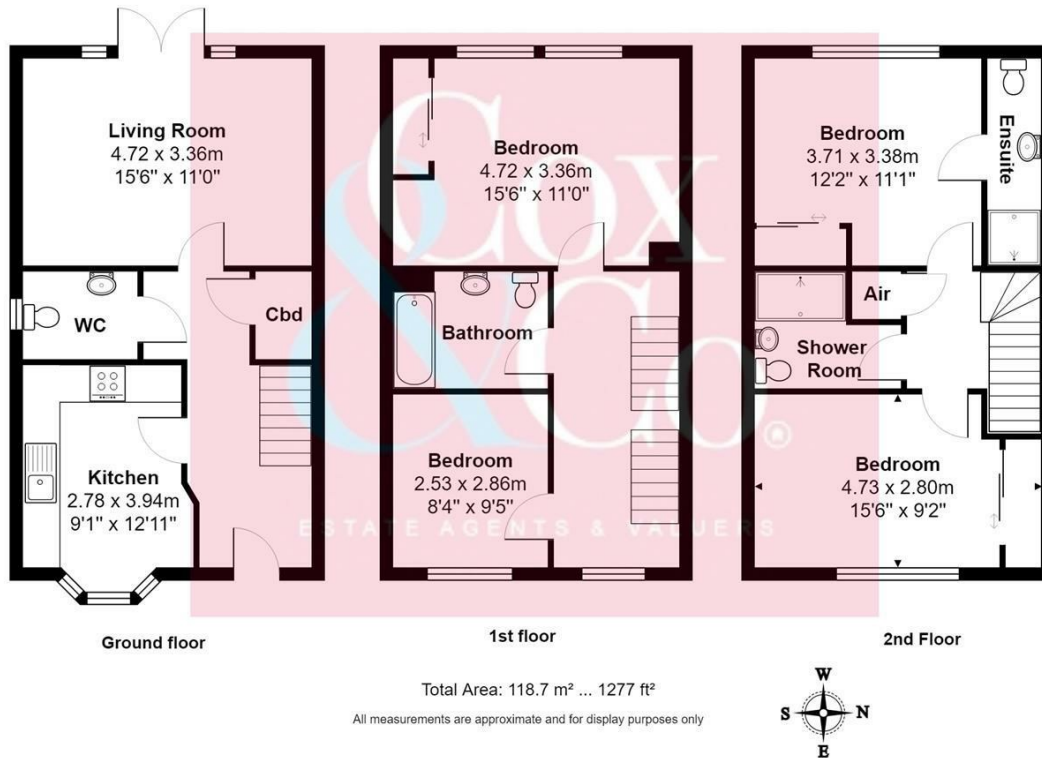




- Modern End Of Terrace Mews House
- Eligible For Green Mortgages
- Three Bathrooms & Ground Floor WC
- Westerly Aspect Garden
- 0.4 Miles To Portslade Station
- Beautifully Presented Throughout
- Four Double Bedrooms
- Kitchen / Breakfast Room
- Three Allocated Parking Bays
- Short Walk To Boundary Road Cafe's & Shops

Portslade Mews, Portslade, Brighton

Price: £575,000 Freehold



Cox & Co are pleased to offer this generously proportioned end-of-terrace Mews House built in 2015, arranged over three floors. Offering four double bedrooms, three bathrooms, West facing garden and three allocated parking bays. Eligible for Green Mortgage Tariffs.

The property is a modern energy efficient home with solar panels, finished to a high specification and beautifully presented throughout. The versatile accommodation comprises; an inviting entrance hallway leading to a good sized lounge with patio doors onto the attractive West facing garden. The modern high gloss kitchen has fully integrated appliances, a feature bay window and space for a breakfast table. On the first floor are two double bedrooms and a family bathroom, the spacious landing leads to a second floor which is a great space for teenagers with a further two double bedrooms with a master ensuite and separate shower room. Outside features a westerly aspect rear garden backing on to Vale Park and having side access and three allocated parking bays.

Portslade Mews is conveniently located in south Portslade a short walk to Boundary Road with an array of cafe's, eateries and shopping facilities, Portslade Station is approximately 0.4 miles and offers a London service, there is also an excellent regular bus service into Hove and across the city. Vale Park is close by with children's play park, garden and wooded area.

Energy Efficiency Rating		Current	Potential
Very energy efficient - lower running costs			
(92 plus) A		88	88
(81-91) B			
(69-80) C			
(55-68) D			
(39-54) E			
(21-38) F			
(1-20) G			
Not energy efficient - higher running costs			
England & Wales		EU Directive 2002/91/EC	