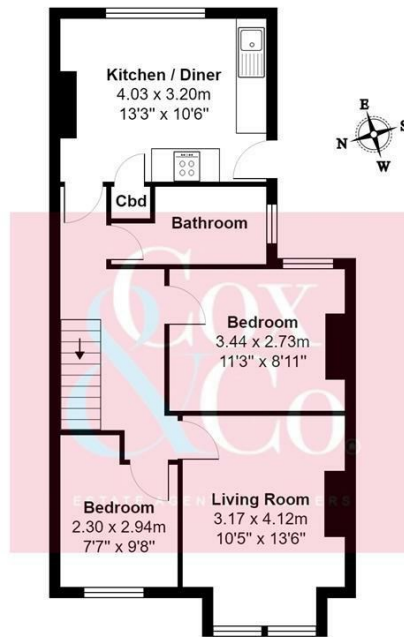




- First Floor Apartment
- Kitchen & Breakfast Room
- Modern Family Bathroom
- Fantastic Location
- Complete Chain Seller Suited
- Two Bedrooms
- Rear Patio Garden
- Private Street Entrance
- Long Lease

## St. Leonards Avenue, Hove

Price: £280,000 Leasehold



Top Floor

Total Area: 56.2 m<sup>2</sup> ... 605 ft<sup>2</sup>

All measurements are approximate and for display purposes only

A delightful first-floor two-bedroom garden flat with its own private street entrance, the property has a spacious west-facing living room, two double bedrooms, a well-fitted kitchen & breakfast room, and a modern family bathroom. Outside, the property has a south and east aspect rear patio garden.

The property is just off New Church Road and very close to local shops, deli's, family-friendly pubs and cafés, the area also offers good local primary and secondary schools. Access to the city centre is made easy with close proximity to Portslade mainline train station with links to London Victoria and London Bridge. Buses run from New Church Road into the town centre and beyond. The popular family-friendly Hove Lagoon is within walking distance.

For viewings please call Cox & Co 01273 00 99 66

