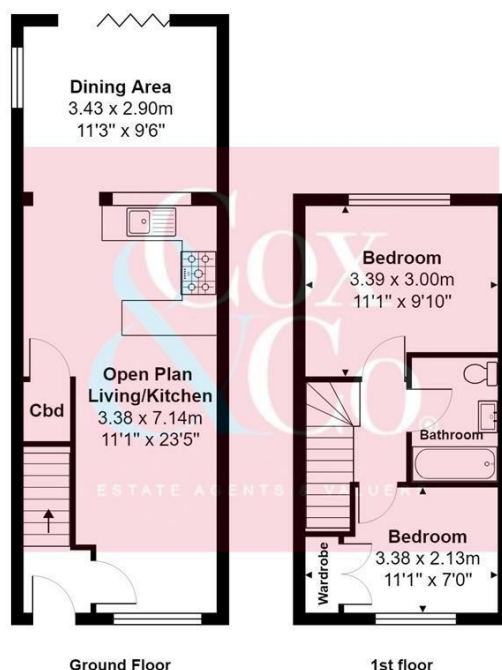




- End of Terrace Town House
- Modern Open Plan Kitchen
- Separate Dining Room
- Very Popular Location
- Newly Fitted bathroom
- Two Bedrooms
- Living Room
- Private Rear Garden
- Good Decorative Order Throughout
- Ideal First Family Home

## Stanley Road, Portslade, Brighton

Price: £350,000 Freehold



Total Area: 59.3 m<sup>2</sup> ... 639 ft<sup>2</sup>

All measurements are approximate and for display purposes only

Cox & Co are pleased to offer this fabulous two bedroom end to terrace townhouse located in the heart of the Southern Cross area in south Portslade.

The property is ideally located as it is only 0.8 miles away from the Boundary Road shopping district with its range of independent retailers coffee shops and restaurants. Portslade Railway Station is also only 0.8 miles away with direct services to both London and Brighton city centres.

The accommodation comprises of having an entrance lobby, an open plan Lounge onto a modern fitted kitchen which adjoins the dinning room with sliding doors overlooking the rear garden. On the first floor, there are two good size bedrooms and a newly fitted bathroom.

For viewings please contact Cox&Co on 01273 00 99 66

