



ESTATE AGENTS & VALUERS

61 Boundary Road
Hove
Sussex
BN3 5TD

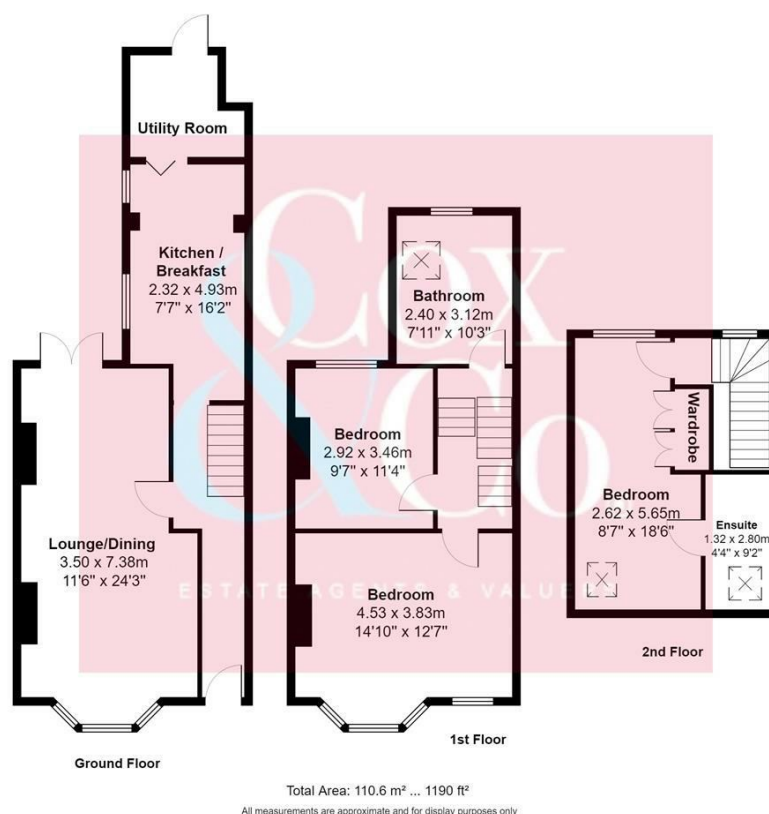
01273 00 99 66
coxandcohomes.co.uk



- Three Storey Period Town House
- Lounge & Dining Room
- Popular Family Location
- Separate Utility Room
- Quiet One Way Street
- Three Bedrooms
- En-Suite To Master Bedroom
- Close To Portslade Mainline Railway Station (0.6 miles)
- South Facing Rear Garden

Elm Road, Portslade, Brighton

Price: £425,000 Freehold



Cox & Co are pleased to bring to the market this delightful three-bedroom, three-storey period townhouse located in the heart of the Southern Cross district of Portslade.

The property is ideally located in a quiet one-way street and is only 0.6 miles away from Portslade mainline railway station and the popular Boundary Road shopping district with all its independent retailers, coffee shops, bars and restaurants.

The accommodation comprises on the ground floor you have a through lounge and dining room, fitted kitchen and a utility room at the rear of the kitchen. You have two double bedrooms and a family bathroom on the first floor. There is a double bedroom on the second floor with an ensuite shower room WC.

Outside, the property has a delightful south-facing rear garden, a real sun trap.

For viewings please call Cox & Co

