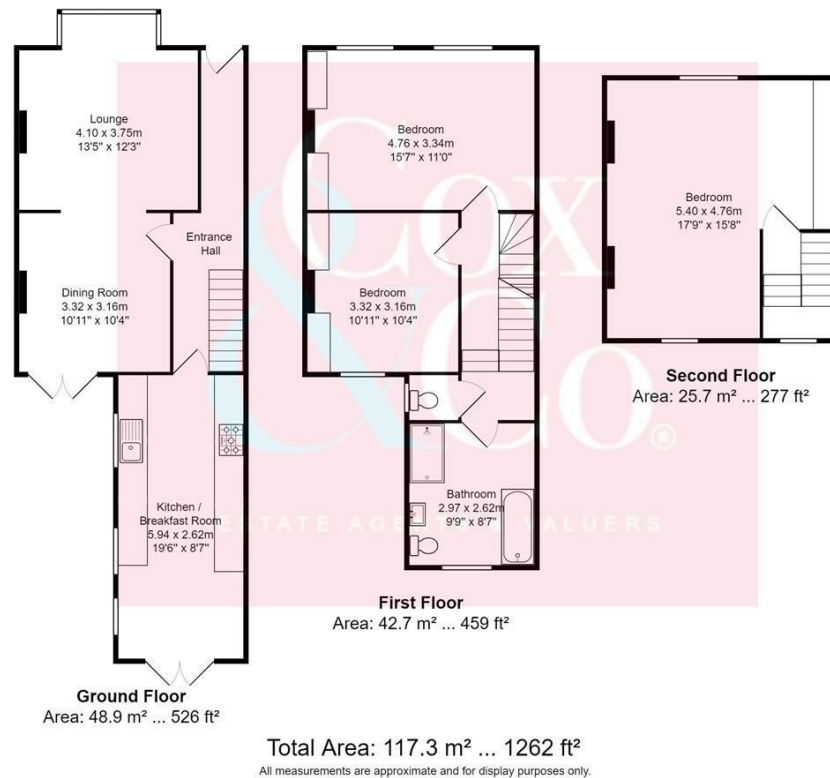




- End Of Terraced House
- Sited Over Three Floors
- Close To Mainline Station
- Lounge Diner
- Popular Location
- Three Bedrooms
- South Facing Rear Garden With Side Access
- Kitchen & Breakfast Room
- Excellent Decorative Order
- A Must View

## St. Andrews Road, Portslade, Brighton

Price: £600,000 Freehold



Cox & Co are pleased to bring this lovely three-bedroom, three-story period townhouse on one of the best roads in South Portslade.

The accommodation is as follows on the ground floor, you have a lovely through lounge dining room and a modern fitted kitchen/breakfast room overlooking the lovely south-facing rear garden. On the first floor, there is a large fantastic family bathroom and two double bedrooms with stairs to the second-floor bedroom. Outside, the property has a lovely landscaped rear garden with side access.

The property is ideally located just off Boundary Road in West Hove and is very close to shops, bars, and cafés. Portslade mainline railway station is only 0.2 miles away, and there are excellent bus services into Brighton & Hove city centers. Vale park, which is very popular with families, is only 300 yards away from this house.

For viewings contact Cox & Co

