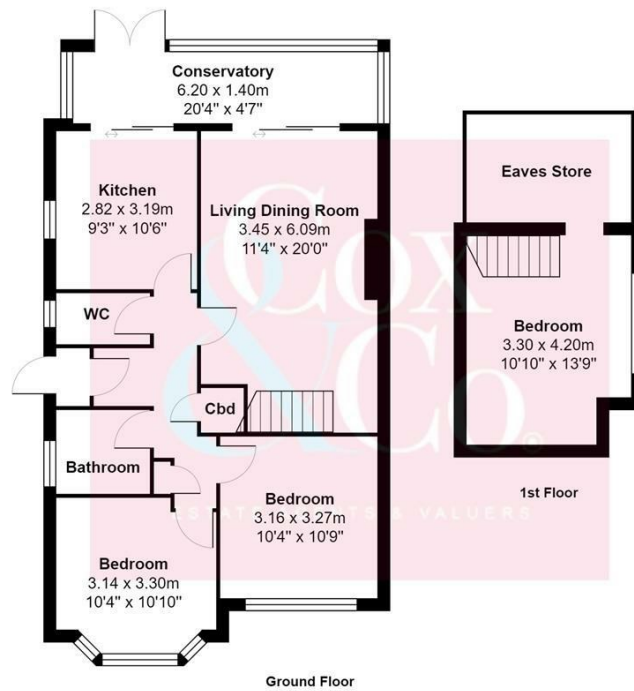




- Two / Three Bedroom Detached Bungalow
- South Facing Rear Garden
- Potential To Extend And Improve (STP)
- Popular Location and Close To Local Amenities
- In Need Of Full Refurbishment With No Chain
- Garage With Private Driveway
- Unexpectedly Re-Available Due to a Breakdown In The Chain

Hawkins Road, Shoreham

Price: £375,000 Freehold



Total Area: 87.2 m² ... 939 ft² (excluding eaves store)
 All measurements are approximate and for display purposes only

*** Unexpectedly re-available due to a breakdown in the chain ***

Cox & Co are pleased to bring this two/three-bedroom detached bungalow to the market. The property is being sold in need of refurbishment and improvement and is an ideal project for anyone looking to improve a property and make a family home.

The property is located in the popular north Shoreham district of Shoreham-By-Sea and is local to excellent schools, local shops and the Holmbush shopping centre. Local bus services can also be found close by, and Southwick mainline railway station offering direct services to both Brighton and London city centres, is only 1.1 miles away.

For Viewings, please get in touch with Cox & Co

