



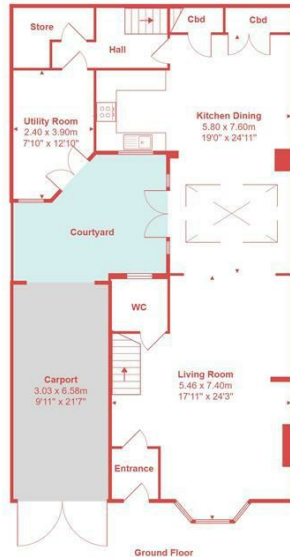
- Stunning Former Coach House
- Internal West Facing Courtyard
- Versatile Accommodation For Live Work Or Blended Living
- The Property Is 2388 Sq Ft So Internal Viewing Advised
- Potential To Improve
- Three/Four Bedrooms Depending On Layout
- Enclosed Car Port
- Close To Hove Seafront
- No Onward Chain
- Must Be Viewed Internally To Be Appreciated

## Westbourne Place, Hove

Price: £900,000 Freehold



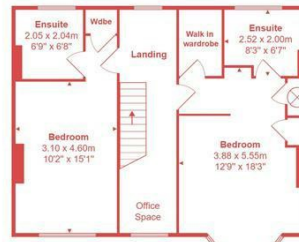
Roof Room



Ground Floor



1st Floor Rear



1st Floor Front

Total Area: 219.6 m<sup>2</sup> ... 2366 ft<sup>2</sup> (excluding courtyard)

All measurements are approximate and for clippings purposes only.

Cox & Co are pleased to bring this unique three/four-bedroom period terraced townhouse to the market. The property has extremely versatile accommodation and fantastic potential to be improved and modernized, or even left as currently, it could make a fantastic live work unit or blended living space with the upstairs of the property currently divided into two separate bedroom suites.

When you enter the property, you are immediately wowed by the impressive living space which is an all-open plan with lounge to the front, and dining room with doors to the internal courtyard. You proceed into the open plan kitchen which is crying out to be extended through into one of the two utility rooms.

On the ground floor you also have a separate cloakroom, two utility rooms and an internal west facing courtyard with a enclosed car port creating a private parking space.

On the front first floor, you have two double bedrooms, both with en-suite bathrooms with additional storage and a large hallway that would make an ideal office space.

Further, on the first floor rear, you have a large bedroom with a separate dressing room and an additional en-suite WC.

Viewing is strictly by appointment with Cox & Co.

