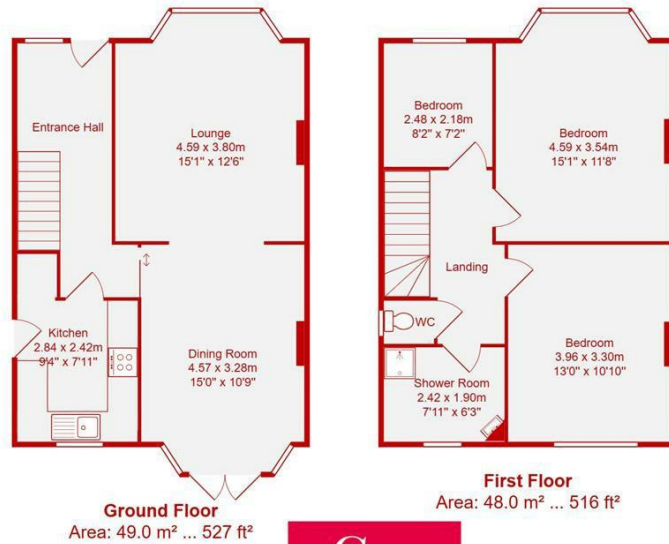




- Three Bedroom Semi Detached House
- Large West Facing Rear Garden
- Garage & Private Drive
- Property Requires Updating
- Probate Sale With No Chain
- Loads Of Potential to Improve & Extend
- Through Lounge Diner
- Very Popular Location

## Woodhouse Road, Hove

Price: £725,000 Freehold



**Total Area: 97.0 m<sup>2</sup> ... 1044 ft<sup>2</sup>**  
**+ West Facing Garden 8.5m x 19m**  
All measurements are approximate and for display purposes only.

Cox & Co are pleased to bring this 1930s three-bedroom semi-detached house to the market.

The property is being sold by probate and, therefore, has no onward chain.

On the ground floor, there is a spacious lounge, dining room, and kitchen. Then, on the first floor, there are three bedrooms, a family bathroom, and a separate WC.

Many houses on the road have been greatly improved, and this house is crying out to be extended and improved.

For viewings, please get in touch with Cox&Co.

Energy Efficiency Rating		Current	Potential
Very energy efficient - lower running costs			
(92 plus) A			
(81-91) B			82
(69-80) C			
(55-68) D		61	
(39-54) E			
(21-38) F			
(1-20) G			
Not energy efficient - higher running costs			
England & Wales		EU Directive 2002/91/EC	

