



ESTATE AGENTS & VALUERS

61 Boundary Road
Hove
Sussex
BN3 5TD

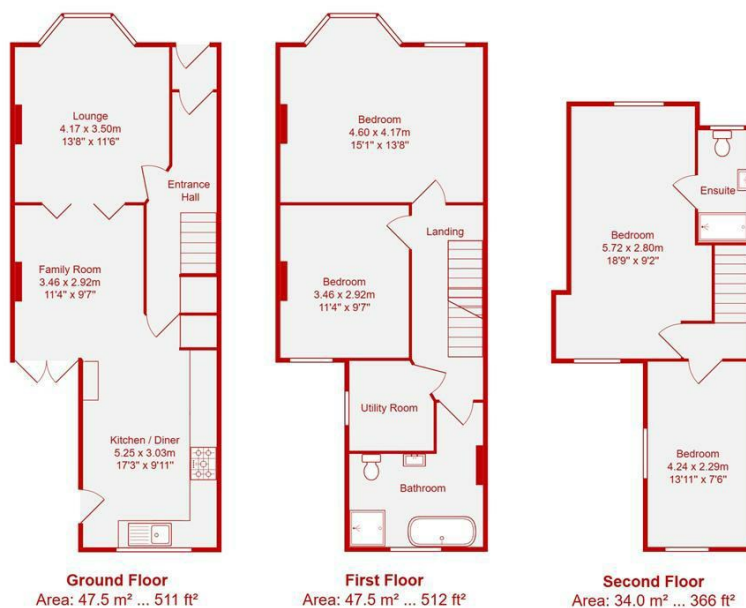
01273 00 99 66
coxandcohomes.co.uk



- Unexpectedly Re-Available
- South Facing Rear Garden
- Large Kitchen Breakfast Room
- 0.9 Miles From Hove Mainline Railway Station
- 0.2 Miles Away From Stoneham Park
- Stunning Three Storey Period Terraced Town House
- Two Bathrooms One En-Suite
- Open Plan Ground Floor
- Close To Great Shops, Bars & Restaurants
- *** Complete Chain Seller Suited ***

Payne Avenue, Hove

Price: £675,000 Freehold



Located on the quiet Payne Avenue in Hove's sought-after Poets Corner area, this charming four-bedroom family home offers convenience and community. Nearby amenities include Stoneham Bakehouse, Stoneham Park with its family-friendly café, The Snug, and Portland Road's array of shops, cafés, pubs, and independent retailers like Ackerman's Music and Lawrence's Art Supplies. The George Payne pub is a short stroll away, while Aldrington and Hove stations provide excellent transport links to London and the South East. Families will appreciate the proximity to well-regarded local schools.

The property spans three floors, with versatile living spaces. The ground floor features a through reception room with folding doors, a fireplace, and French doors opening to a sunny south-facing garden.

The open-plan kitchen-breakfast room offers ample space for a dining table and includes painted wooden units and a large range cooker.

Upstairs, the first floor has two spacious double bedrooms, one with a bay window and built-in wardrobes, and a family bathroom with a freestanding bath, a separate shower, and an adjacent utility room.

The top floor houses a stylish loft conversion with two additional double bedrooms, one with an ensuite shower room and the other offering rooftop views and a glimpse of the sea.

This delightful home combines character, practicality, and an ideal location for modern family living.

