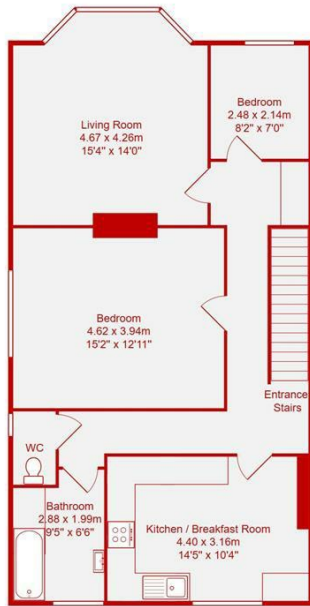




- First Floor Converted Apartment
- New 999 Year Lease (issued on completion)
- Kitchen Breakfast Room
- Sought After Location
- Two Bedrooms
- Large Lounge
- Bathroom & Separate WC
- No Chain

Church Walk, Worthing

Price: £260,000 Leasehold



Total Area: 82.0 m² ... 882 ft²
 All measurements are approximate and for display purposes only.

Cox & Co are delighted to offer to the market this first-floor apartment, situated in this sought-after Worthing location, close to the seafront, Worthing town centre, parks, schools, Worthing hospital bus routes and the A259 all nearby.

The property does require updating and refurbishment and offers a fantastic opportunity to improve and potentially extend into the loft (subject to the relevant permissions)

Accommodation offers a large lounge, kitchen, two bedrooms, and a bathroom.

On completion, the property will benefit from a new lease of 999 years.

Energy Efficiency Rating		Current	Potential
Very energy efficient - lower running costs			
(92 plus) A			
(81-91) B			
(69-80) C		69	75
(55-68) D			
(39-54) E			
(21-38) F			
(1-20) G			
Not energy efficient - higher running costs			
England & Wales		EU Directive 2002/91/EC	

