



ESTATE AGENTS & VALUERS

61 Boundary Road
Hove
Sussex
BN3 5TD

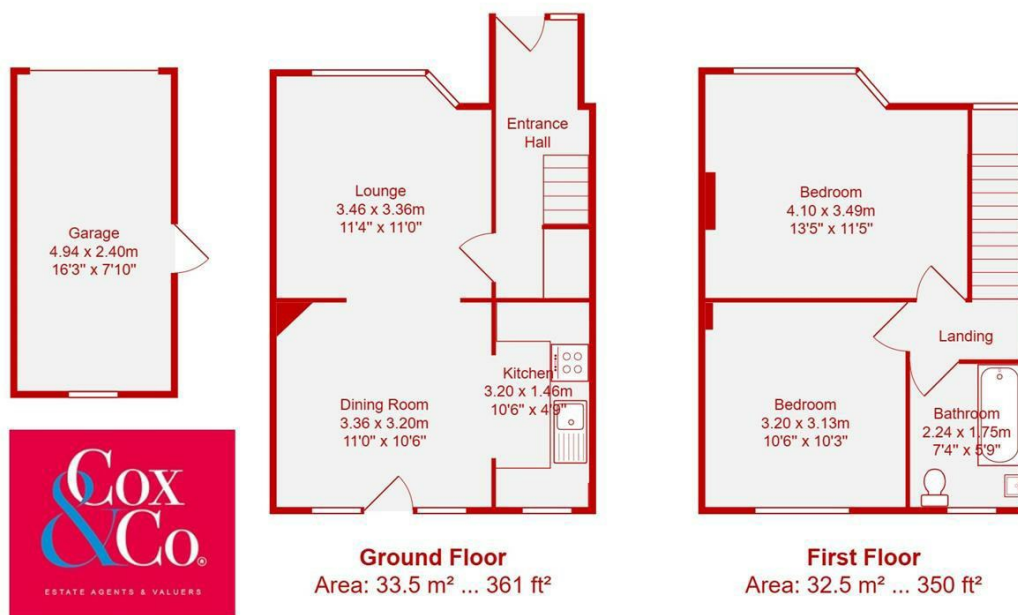
01273 00 99 66
coxandcohomes.co.uk



- No Chain
- Garage
- Two Double Bedrooms
- Close to Fishersgate Train Station
- Two Bedroom Terraced House
- Large Garden
- In Need Of Some Modernisation
- Great Location

Wolseley Road, Portslade

Price: £300,000 Freehold



Total Area: 66.0 m² ... 710 ft² (excluding garage)

All measurements are approximate and for display purposes only.

Located on the popular Wolseley Road in Portslade, this two-bedroom mid-terraced house presents an excellent opportunity for buyers looking to create a home tailored to their own style. Offered with no onward chain, this property is ideal for those seeking a well-proportioned space in need of some modernisation.

As you enter the home, you're welcomed by a generous hallway leading to a bright and airy living room at the front, which benefits from a delightful fireplace, perfect for relaxing or entertaining. To the rear, you'll find a kitchen and separate dining room, with direct access out to the spacious rear garden – a fantastic space for outdoor living. The garden also leads to a detached garage, which can additionally be accessed via Crown Road, offering convenient rear access and secure parking for a small car or storage.

Upstairs, the primary bedroom spans the front of the property and offers ample space. This room is carpeted but underneath you will find lovely hard wood floor boards. The second double bedroom enjoys peaceful views over the garden. The family bathroom includes room for a shower over the bath, a WC, and wash basin.

This is a great opportunity to acquire a solid, spacious home in a well-connected location, just waiting for a new owner to modernise and make it their own.

The house is located in a quiet part of Portslade with excellent travel links and amenities close by. There is a short walk to St Nicholas and Brackenbury Primary school with plenty of options for secondary. Fishersgate station is 0.2 miles away (5 minute walk approx.)

