



ESTATE AGENTS & VALUERS

61 Boundary Road
Hove
Sussex
BN3 5TD

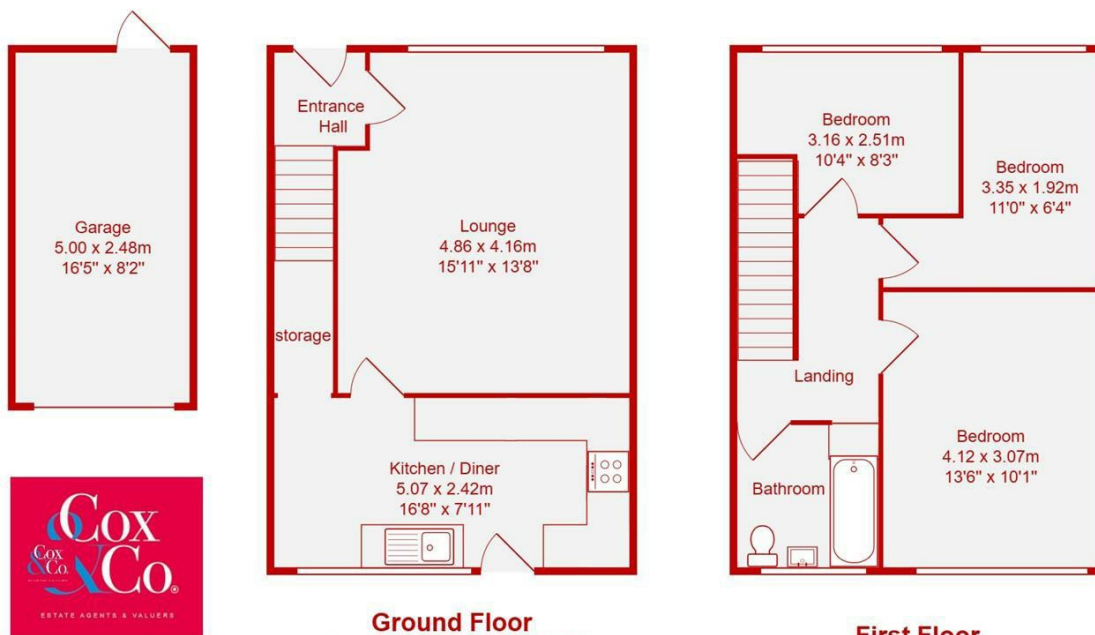
01273 00 99 66
coxandcohomes.co.uk



- Complete Chain
- Three Bedrooms
- Landscaped Garden
- Large Front Garden
- Immaculate End Of Terrace House
- Off Road Parking
- External Garage With Access From Garden
- Fantastic Condition Throughout

Rowan Close, Portslade, Brighton

Price: £400,000 Freehold



Ground Floor
Area: 38.0 m² ... 409 ft²

First Floor
Area: 38.0 m² ... 409 ft²

Total Area: 76.0 m² ... 818 ft² (excluding garage)

Nestled in the heart of charming Portslade Old Village, this beautifully presented three-bedroom end-of-terrace home offers a perfect blend of space, comfort, and convenience. Positioned on a quiet residential road, the property has a generous front garden, private off-road parking, and a separate garage—ideal for modern family living.

As you step inside, you're greeted by a welcoming hallway that sets the tone for the rest of the home. To your left, a spacious living room benefits from an abundance of natural light thanks to a large south-facing window that overlooks the lush front garden. At the rear of the house, a stylish and well-appointed kitchen/breakfast room provides ample workspace and storage—perfect for family meals or entertaining.

The rear garden is a true highlight—meticulously maintained and thoughtfully landscaped, it offers a peaceful retreat with direct access to the garage.

Upstairs, the accommodation continues to impress. The primary bedroom is bright and spacious, complemented by a well-sized second double room and a versatile single room, ideal for a child's bedroom, home office, or dressing room. A sleek, modern family bathroom completes the upper floor.

Additional benefits include a private parking space at the foot of the front garden and excellent transport links, with regular buses into Brighton & Hove. With Portslade Village High Street just moments away, offering shops, cafes, and amenities, this property truly offers village charm with city convenience.

